



ALÁRÓ CITY

[Subscribe to Alaro City](#)

MODERN & SLEEK *LUXURY HOMES*

LANDED PROPERTIES WITH COMPLETE TITLE DOCUMENTS

Land Units available from
\$133-\$250 PER SQM

Apartment Units available from
\$79,950-\$87,950

-  CCTV SURVEILLANCE
-  CONSTANT POWER
-  POTABLE WATER
-  GOOD ROAD NETWORK
-  CAR GARAGE
-  GYM

ALARO CITY IS AN INTEGRATED, MIXED-USE CITY PLANNED ON MORE THAN 2000 HECTARES OF LAND IN THE LEKKI FREE TRADE ZONE AXIS, AN INTEGRATED METROPOLIS DESIGNED TO PROVIDE A BESPOKE LIFESTYLE FOR YOU

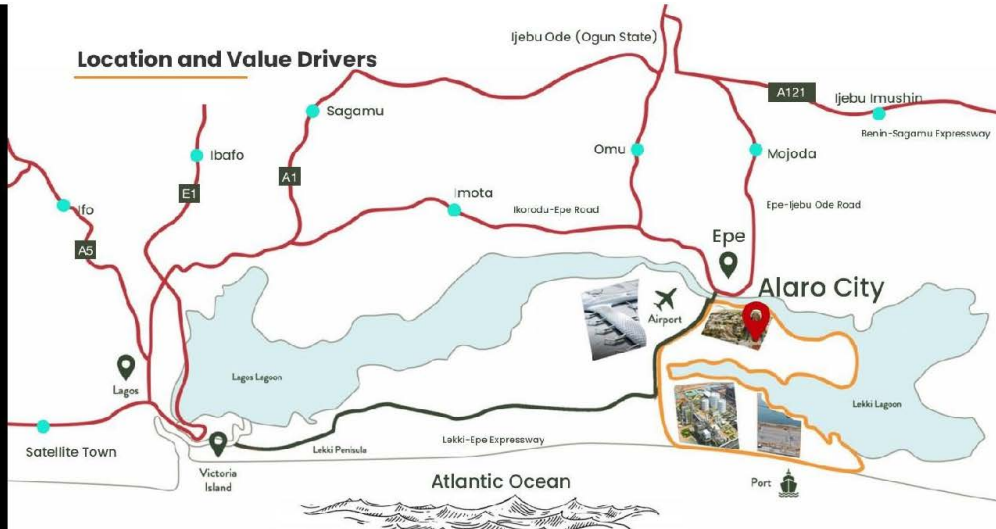


**IBEJU LEKKI,
LAGOS**

for enquiries, contact:

Adebayo Olatunji | aogx@chevron.com | 0805 580 1464
Hameed Balogun | hbdb@chevron.com | 0808 200 0167

Location and Value Drivers

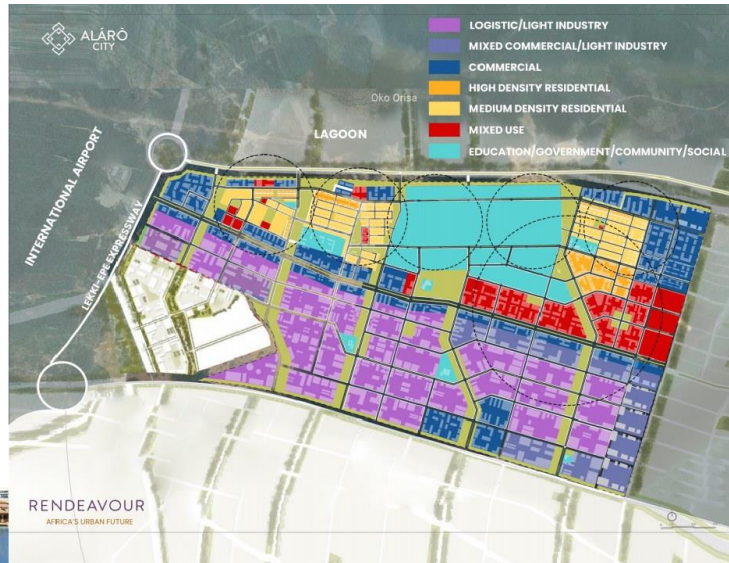


City-Scale



Master Plan

Designed by world renowned urban planners Skidmore, Owings & Merrill (SOM).



Free Zone Benefits

EXEMPT FROM



Income tax
on free zone
income



WHT
on
dividends



VAT on free
zone
purchases



Customs
and excise
duties



FX
controls



Infrastructure



Infrastructure



Infrastructure



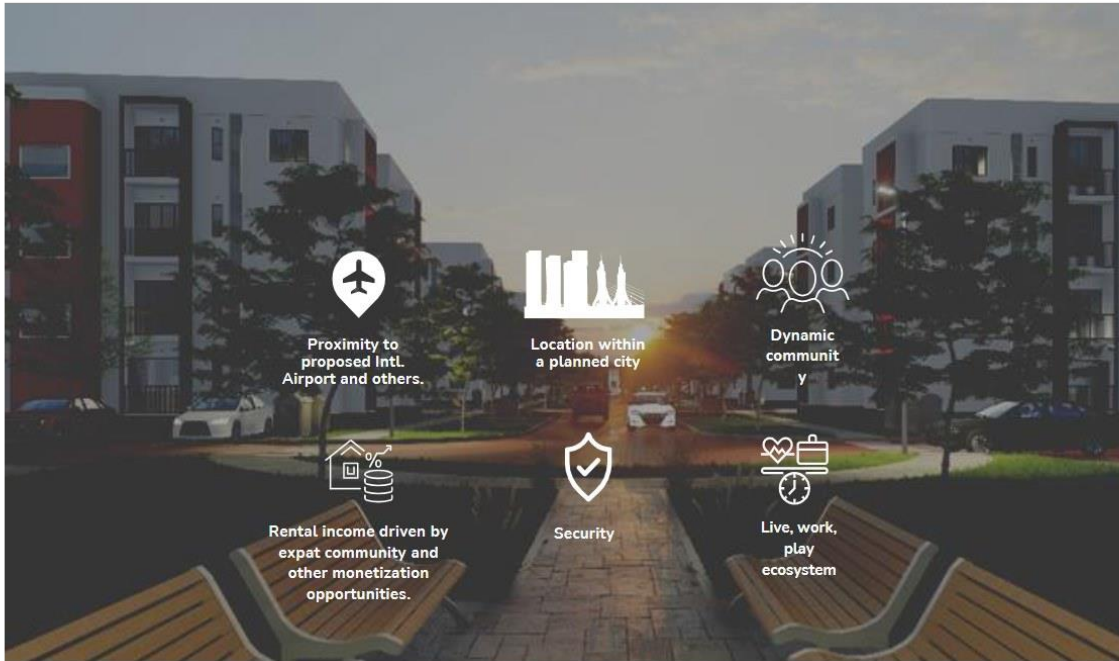
16

Infrastructure



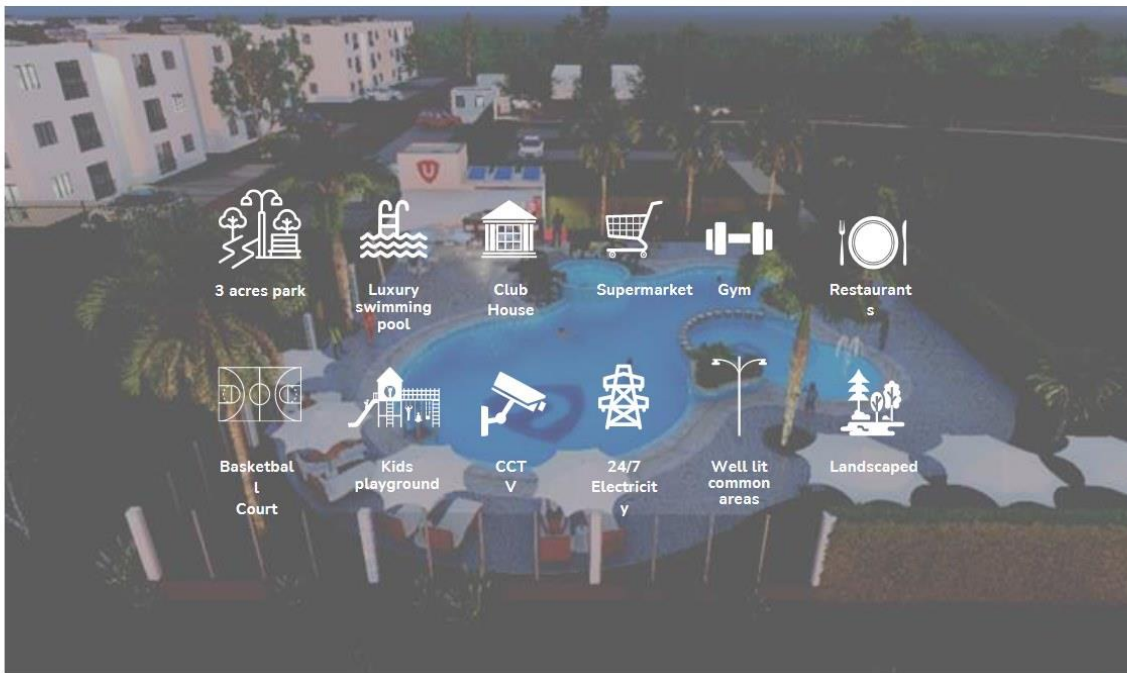
14

Value Drivers



1 - INTRODUCING: UNIVERSAL HOMES

Universal One Amenities









Residential



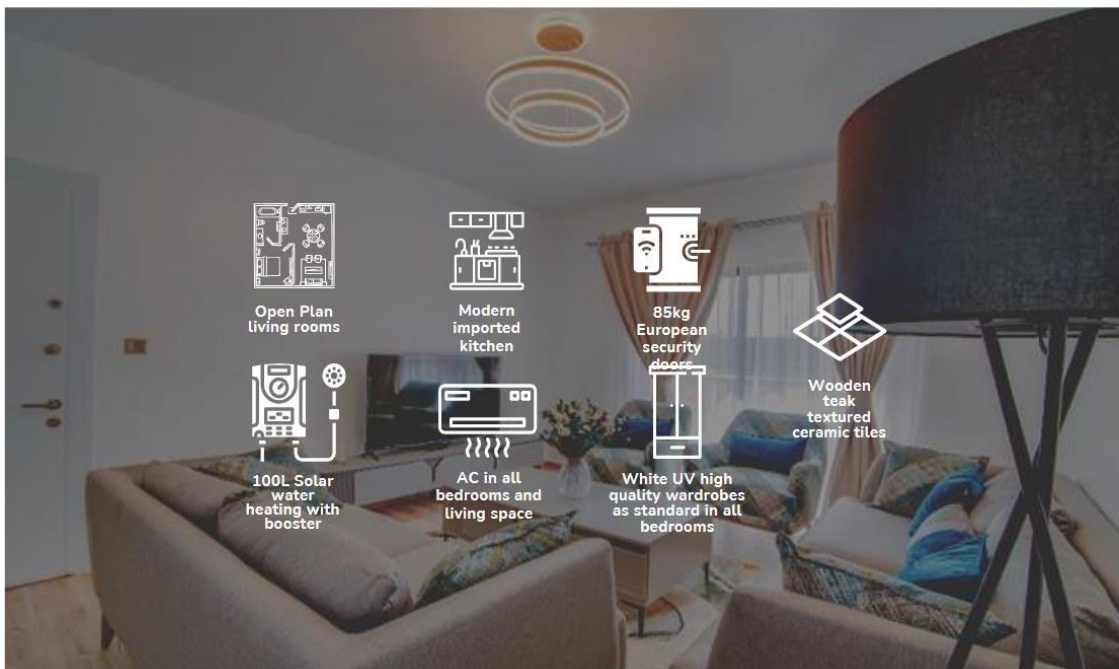




Floor Plan



Home Features



Open Plan living rooms



Modern imported kitchen



85kg European security doors



100L Solar water heating with booster



AC in all bedrooms and living space



White UV high quality wardrobes as standard in all bedrooms



Wooden teak textured ceramic tiles

Show Home



Businesses, Brands and Investors



18

TY Developments



- 90,000 sqm
- Grade A logistics park
- Under development



Mantrac Caterpillar



- 20,000 sqm
- Warehousing, sales and service of earth moving equipment
- Operational



Ariel Foods FZE



- 28,000 sqm
- Ready-to-use therapeutic food
- Fully operational



Bua Group



- 30,000 sqm
- Manufacturing of detergent soap
- Under construction



- 28,000 sqm
- Construction and production of building materials
- Under construction



HMD Africa



- 5,000 sqm
- Trading and distribution of heavy equipment
- Fully operational

